

vision

Residents of New Hampshire achieve their highest potential for health and well-being in the communities where they live, work, learn, and play.

values

*Respect • Innovation • Integrity
Engagement • Excellence • Equity
Continuous Learning*

mission

Improve health and health care in communities through partnerships that engage individuals and organizations.

objectives

High Value Quality

Improve health by promoting innovative, high value quality practices within organizations and communities.

Healthier Communities

Lead change strategies that educate, create and sustain healthier communities and make the healthy choice the easy choice.

Access

Work to promote access to affordable health care and resources that support the well-being of all people.

Foundation milestones

1999

- Healthy Mom/Healthy Baby published
- Partnership for End-of-Life Care formed

2000

- NH Medication Bridge starts

2001

- Community Prevention & Treatment Initiative

2004

- NH Health Access Network starts

2005

- Cultural Competency Health Group starts

1996

- 14,313 births in NH
- 6.4% of NH people below poverty level
- Bill Clinton re-elected

1996

2000

- 9/11 Terrorist Attacks

2001

- Old Man of the Mountains falls
- Iraq War launched

2003

- Human Genome Project completed
- George W. Bush elected

2000

- Columbine High School Massacre

1999

2002

- First US camera phone (Sanyo) sold

key events

making history

by the numbers

NH is proud of its historic role as the first state in the nation to hold a presidential election primary every four years. Today, the Foundation for Healthy Communities is proud of several first-ever in New Hampshire initiatives in its brief history including:

NH Prevention Guidelines, an innovation recognized by the National Committee on Quality Assurance

Statewide survey of all women giving birth in the state to assess their patient care experience

Risky Drinking Prevention Project tested Screening and Brief Intervention and Treatment (SBIRT) in primary care and was the first integration of health insurance claims data in NH

Statewide survey of registered nurses in practice in NH

NH Med Bank, first charitable pharmacy in NH

NH Health Access Network, first statewide network of financial assistance for health care with all hospitals in NH working with medical practices and health centers

NH Medication Bridge Program, first statewide network of prescription assistance programs

First state to have all hospitals voluntarily, **publicly report quality CMS Core Measures**

NH Healthcare Decisions Coalition led effort to establish **first statute to establish portable do not attempt resuscitation and surrogate decision making policy**



\$41.4

million in cost savings and 5,041 patient harms prevented through NH Partnership for Patients



315,000

Advance Care Planning Guides distributed



2,000+

participants in comprehensive cancer control initiatives



5-2-1-0

Healthy NH health campaign to prevent childhood obesity



155

NH towns / cities with 65% of the state's 1.3 million people served by HEAL community coalition partners



\$20.8

million to improve health and health care through innovative partnerships, with \$6.6 million in core support from NH hospitals leveraging \$14.2 million in grants

2006

- NH Comprehensive Cancer Collaboration

2007

- Walk NH Relay

2008

- CATCH Kids Club
- HEAL NH starts

2011

- NH Partnership for Patients starts

2012

- Patient & Family Engagement Initiative starts

2015

- NH Med Bank starts

2008

2012

2016

- Barack Obama elected

2008

- iPhone is 'Invention of the Year'

2007

- Accountable Care Act signed into law

2010

- A new US President to be elected in November

2016

- 12,302 births in NH
- 9.2% of NH people below poverty level

2014

- NH population is 1.24 million, US population reaches 300 million

2006

We appreciate the support of our funding partners:

Alexander Eastman Foundation
 American Planning Association
 Anthem BC/BS of New Hampshire
 Benton Foundation
 Boston Foundation
 Byrne Foundation
 CIGNA
 Community Health Options
 Endowment for Health
 Harvard Pilgrim Health Care
 Harvard Pilgrim Healthcare Foundation
 Health Research & Education Trust
 HNH Foundation
 Jessie B. Cox Charitable Lead Trust
 Local Government Center Health Trust
 March of Dimes
 Merck
 Minuteman Health
 New Futures
 NH Charitable Foundation
 NH Children's Trust Fund
 NH Department of Health and Human Services
 NH Healthy Families
 Oakhurst Dairy
 Paul Newman Foundation
 PhRMA
 Robert Wood Johnson Foundation
 Service Credit Union
 US Centers for Disease Control and Prevention
 US Health Resources Administration
 Well Sense Health Plan
 Wellpoint Foundation

2016 Board of Trustees:

Mary DeVeau (Chair), Former CEO, Concord Regional Visiting Nurse Association

 George Blike, MD (Vice Chair), Chief Quality and Value Officer, Dartmouth-Hitchcock, Lebanon

 Stephen Ahnen (Secretary/Treasurer), President, NH Hospital Association

 Shawn V. LaFrance (ex officio), Executive Director, Foundation for Healthy Communities

 William Brewster, MD, Vice President, NH Market, Harvard Pilgrim Health Care, Manchester

 Corin DeChirico, DO, Associate Chief Medical Officer, Southern NH Medical Center, Nashua

 Peter J. Evers, President/CEO, Riverbend Community Mental Health Center, Concord

 Paul Gardent, Faculty, The Dartmouth Institute & Tuck School of Business, Hanover

 Richard Lafleur, MD, Medical Director, Anthem BC/BS of NH, Manchester

 Michelle McEwen, President/CEO, Spere Memorial Hospital, Plymouth

 Scott McKinnon, President/CEO, Memorial Hospital, North Conway

Elizabeth Merry, Trustee, LRGHealthcare, Laconia

 Arthur Nichols, Former President, Cheshire Medical Center, Keene

 Arthur O'Leary, Regional Vice President of Operations, Genesis HealthCare, Concord

 Helen C. Pervanas, PharmD, Assistant Professor, Mass. College of Pharmacy and Health Sciences, Manchester

 John F. Robb, MD, Director, Interventional Cardiology at Mary Hitchcock Memorial Hospital, Lebanon

 Maria Ryan, PhD, APRN, CEO, Cottage Hospital, Woodsville

 Jeanne Ryer, Director, NH Citizens Health Initiative/ University of New Hampshire, Concord

 Keith Shute, MD, Chief Medical Officer & Senior Vice President, Androscoggin Valley Hospital, Berlin

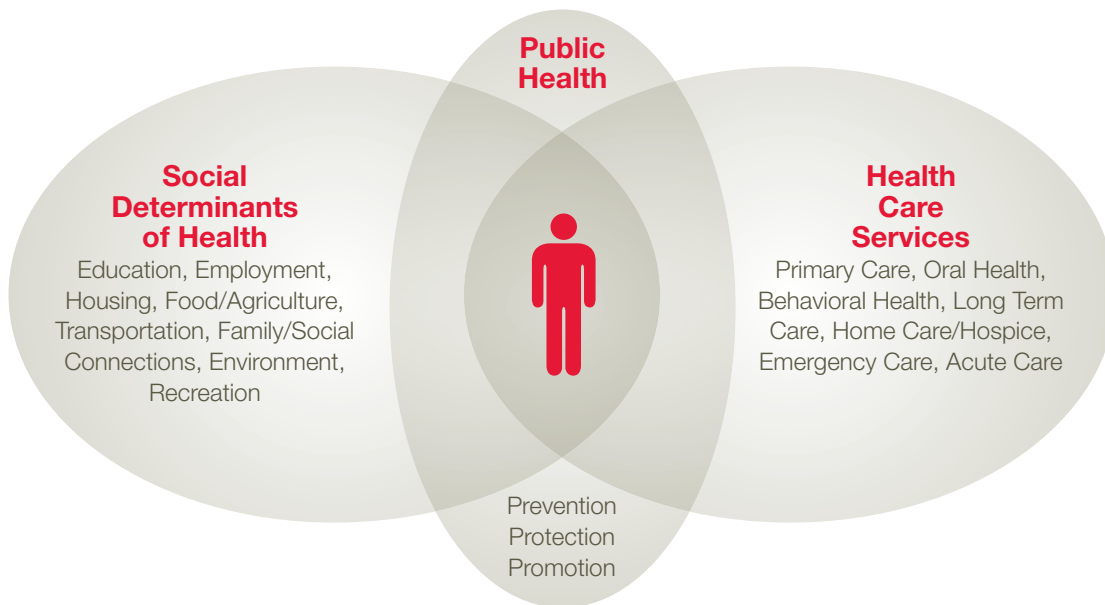
 Helen Taft, Executive Director, Families First, Portsmouth

 Trinidad Tellez, MD, Director, Office of Minority Health and Refugee Affairs, NH Dept. of Health and Human Services, Concord

 Gregory Walker, President/CEO, Wentworth-Douglas Hospital, Dover

 Warren West, President & CEO, North Country Healthcare, Littleton

*total population health:
 a framework for NH*



advancing equity for all

For more information, visit: www.healthynh.com